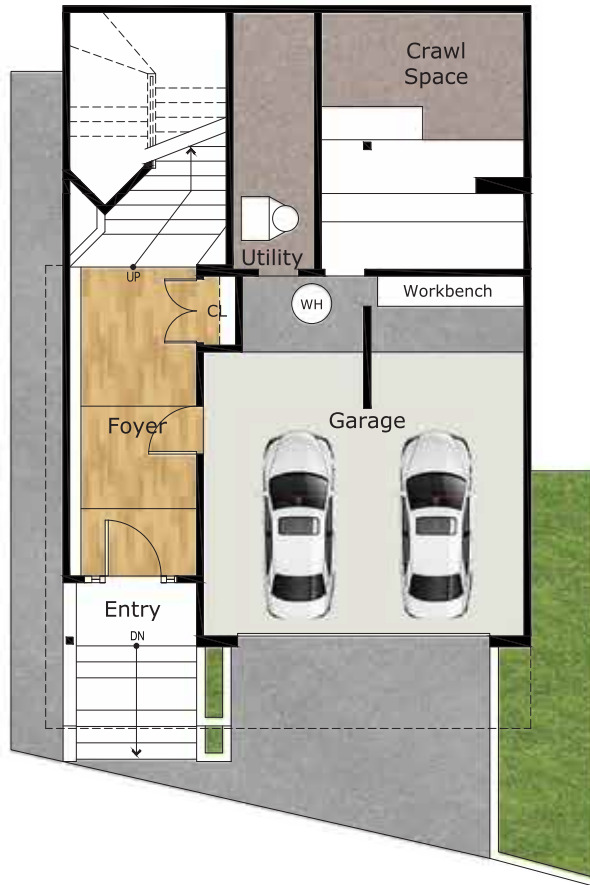
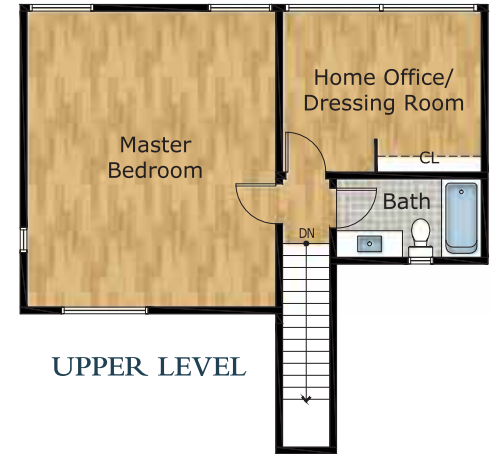




MAIN LEVEL



LOWER LEVEL



UPPER LEVEL



Exclusively offered by:
Andrew Herrera II
 Berkshire Hathaway HomeServices
 Top Producing Agent
 (415) 564-9777

CalDRE # 01199229

Andrew@AndrewHerrera.com
 www.AndrewHerrera.com

BERKSHIRE HATHAWAY HOMESERVICES | **FRANCISCAN PROPERTIES** SAN FRANCISCO, CA

©2024 BHH Affiliates, LLC. An independently owned and operated franchisee of BHH Affiliates, LLC. Berkshire Hathaway HomeServices and the Berkshire Hathaway HomeServices symbol are registered service marks of Columbia Insurance Company, a Berkshire Hathaway affiliate. Equal Housing Opportunity.

Andrew Herrera II presents...



415 Lansdale Avenue
 - SHERWOOD FOREST -





Sherwood Forest Stylish Contemporary Pacific Ocean View Home!

This sophisticated Contemporary Pacific Ocean view home built in 1955 is tucked away on a wonderful block in the heart of the neighborhood! An inviting entrance leads to the notable front door and into a grand lobby-like greeting hall with convenient coat closet and impressive open-banister staircase. The magnificent living room with vaulted open-beam ceiling and recessed lighting boasts a wood-burning fireplace with classic mantel, built-in bookshelves and cabinets, hardwood floors and two big picture windows with views to the Pacific Ocean. The spacious dining room with striking chandelier and adjacent walk-out terrace with retractable awning and awesome views is perfect for entertaining! The beautifully remodeled gourmet kitchen with work-island/breakfast bar and skylight and a contiguous family/great room with access to the yard showcases all stainless steel appliances including a five-burner gas range and built-in microwave, Carrara quartz counters, custom seafoam green painted wood cabinets with snazzy hardware and a classy corner wet-bar with open glassware shelving above.



An attractive hallway with linen, coat, and storage closets, an enclosed laundry area with washer and dryer, two good-size bedrooms and two full baths – one bedroom as an en-suite, the other with views to the garden – end this level. A dramatic open staircase with clerestory windows ascends to the upper master suite level. This floor features an enormous primary bedroom with vaulted ceiling, skylight and sweeping Pacific Ocean views, a home office/dressing room or 4th bedroom overlooking a sylvan setting, and a full tile bath with vanity and shower over tub. The amazing park-like landscaped backyard with gigantic patio, colorful terraced garden and mature trees including an ancient eucalyptus completes this truly special home!

Features

- ◆ 3 bedrooms
- ◆ 3 full baths
- ◆ Living room with vaulted ceiling
- ◆ Spacious dining room
- ◆ Wood-burning fireplace
- ◆ Built-in bookshelves and cabinets
- ◆ Gourmet kitchen
- ◆ Work-island/breakfast bar
- ◆ Family/great room
- ◆ Home office/4th bedroom
- ◆ Hardwood floors
- ◆ Multiple skylights
- ◆ Walk-out terrace with retractable awning
- ◆ Sweeping Pacific Ocean views
- ◆ Laundry closet with washer & dryer
- ◆ Ample storage, work-bench
- ◆ Park-like landscaped backyard, patio
- ◆ 2 car side-by-side parking garage

Offered at \$2,195,000

